



Campas Síochána
Mhuineacháin

Monaghan
Peace Campus

Monaghan Peace Campus Information





INTRODUCTION

	PAGE
Introduction	05
Background	06
A Safe Space for Expression	07
Peacebuilding	08
Significance of the Location	08
Building Design	10
Building Layout	10
Cross-Community Cooperation	12
Strategic and Corporate Policy Context	12
Need and Demand	13
Monitoring and Evaluation	14
Horizontal Principles	14
Exit Strategy and Management	15
Transformative Effect	15
Funding	16



INTRODUCTION

The Peace Campus was developed to address the needs that still exist in our communities today such as issues of segregation, fears to engage and an unwillingness to express identity. This unique facility allows all communities to come together to engage in a safe setting. To dispel myths and allow relationships to be built will not only benefit individuals but also the wider community. The aim is to engage with all communities especially where there is

a legacy of difference and segregation in relation to attitudes and beliefs.

In addition to the development of much needed community space in a neutral setting, this iconic space also includes youth services, a barista bar café area, dedicated integrated community hire spaces and a Performance stage.

We aim to be a beacon of hope and a catalyst for positive change, not only in Ireland but

around the world. Through our programmes and events, the Peace Campus wishes to empower individuals and communities to engage in dialogue, understand different perspectives and work towards a future where community and unity in peace prevails.

We look forward to sharing the Peace Campus with you.

Culture and Development Team



BACKGROUND

In its border location, not only did Monaghan suffer loss of life when it was bombed during the conflict, the town saw significant population change as a result of displacement of families from Northern Ireland and a corresponding migration of Protestant (and multi-faith) families away from Monaghan.

Now in a post-conflict society Monaghan still bears the impact of conflict where minority communities face

invisible barriers to acceptance and integration within the wider community and a fear that their culture and heritage are unwelcome. The lack of shared space embedded segregation and created an environment where communities live and socialise separately, thereby providing opportunity for sectarian and racist attitudes to remain within our society.

The Monaghan Peace Campus aims to positively redressing

issues of separation, isolation and division, which impacted Monaghan as a result of the conflict through the development of this new integrated shared space.

We provide a safe space, open and welcoming to all where both difference and unity are celebrated, where history and learning have a home and where people of all ages and backgrounds have a place to come together to build a shared future.



A SAFE SPACE FOR EXPRESSION

The Peace Campus aims to facilitate the expression of culture and heritage; the integration of communities through joint activities; to

increase understanding, acceptance and tolerance of others from different backgrounds, perspectives, traditions and beliefs.

This is achieved in part by our Peacebuilding Programmes.



PEACEBUILDING

Peacebuilding programmes and activities include Shared History - a decade of commemorations; the impacts and experiences of partition and the conflict; immigration past and present and how that continues to shape our society and sense of

community today, challenges for BME communities; Culture and Tradition - with a focus on exploring and presenting minority faith cultures to a wider audience; music as an expression of Heritage and a means to engage and build connections between people

of different backgrounds; Dialogue as a means to uncover our commonalities and dispel prejudice and misunderstanding; capacity building for people.

SIGNIFICANCE OF THE LOCATION

The Peace Campus location is a prominent town centre site, 5km from the border, adjacent to the site of the Monaghan Bombing.

It's close to the two main Protestant Schools in the town, Monaghan Model School and

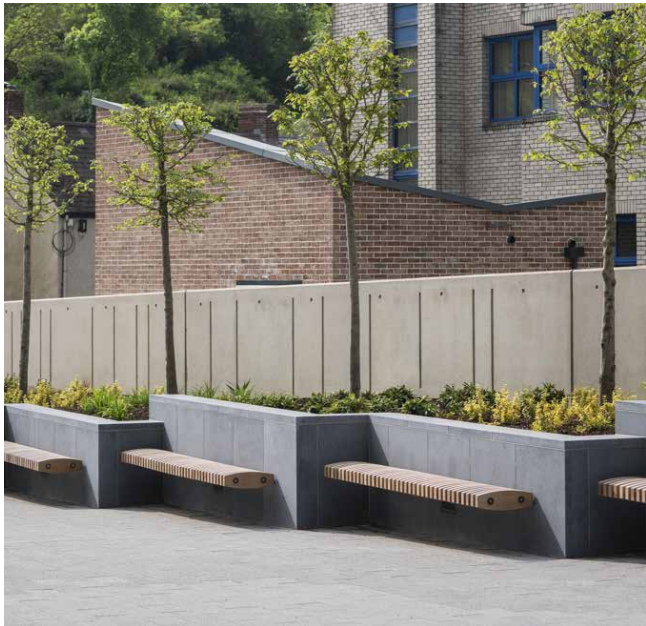
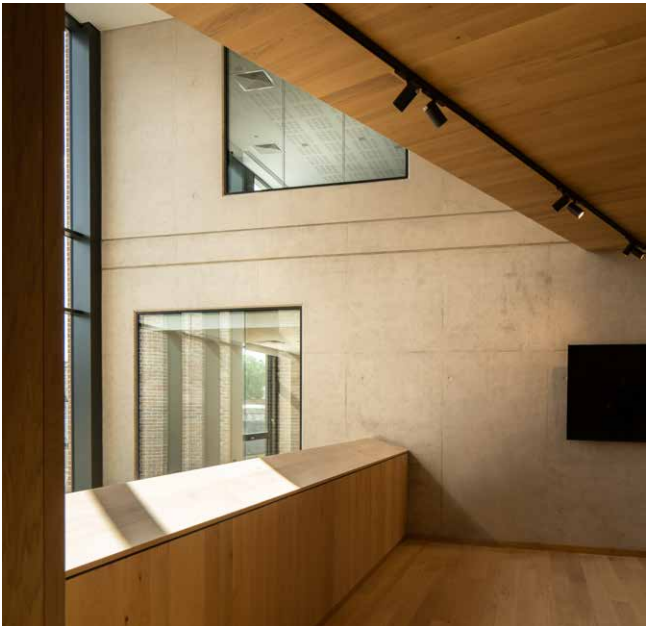
Monaghan Collegiate as well as two of the most deprived & segregated housing estates in Monaghan Mullaghmatt and Killygoan. The Peace Campus actively engages with all schools and single identity communities locally, cross-border and beyond in

Peacebuilding activities, plans and programmes as part of its commitment to all forms of Community, Public and Digital Engagement.



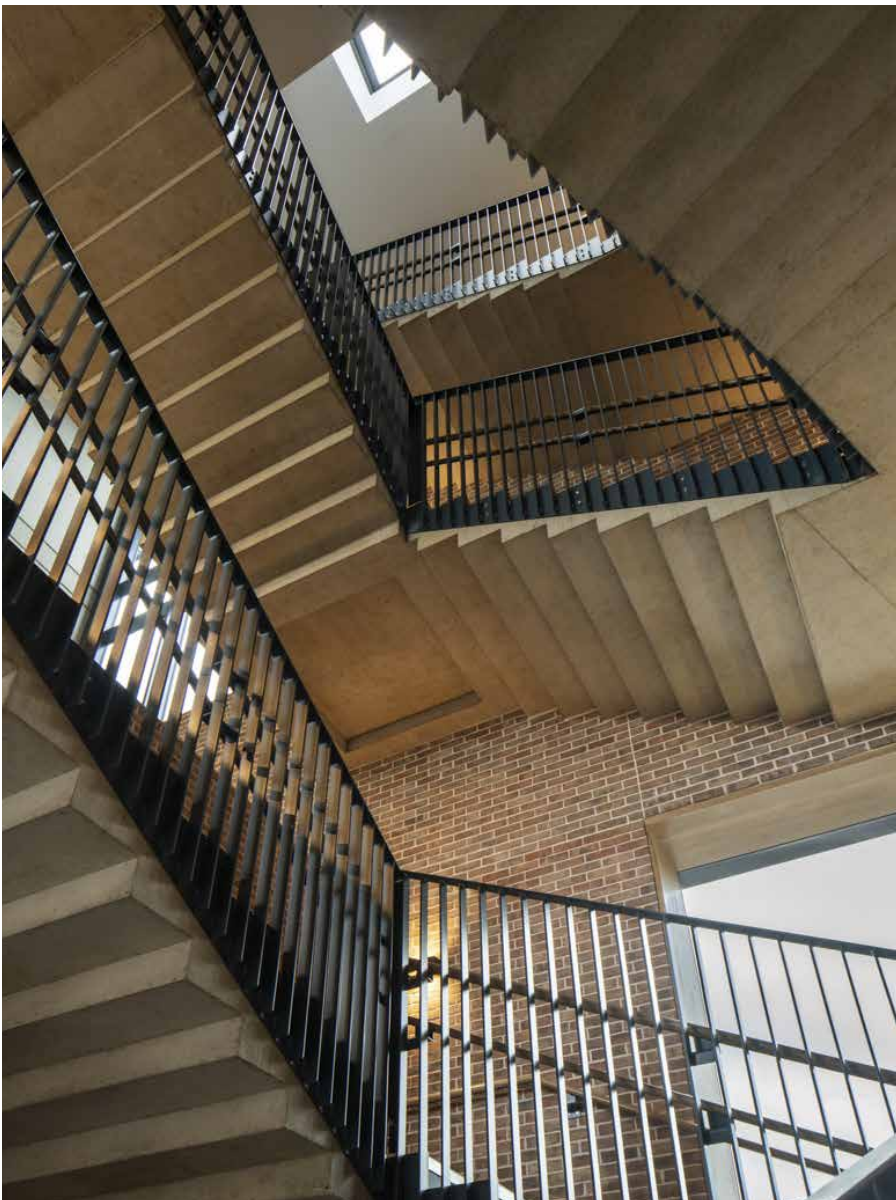
BUILDING DESIGN

The Peace Campus incorporates the principles of sustainable development, specifying materials that have Grade A sustainability credentials, maximise energy efficiency and the longevity of building features through whole life costing. Monaghan County Council has achieved a BER rating of A3.



BUILDING LAYOUT

The building layout creates flexible spaces accessed off open social areas that can evolve with the needs of the community. Facilities include a youth zone, office spaces for hire, integrated community hire rooms, office spaces, multimedia facilities for digital content production (planned for September 2025), self-service barista bar café area, the town library and Monaghan County Museum, as well as an outdoor Performance Stage and Pedestrian Plaza area.



CROSS-COMMUNITY COOPERATION

The Peace Campus was developed with active cross-community engagement through consultation sessions, focus groups and on-line questionnaires. There has been the involvement, support and commitment for the Orange Order and Ulster Scots Agency. This is the first time either agency participated in a

Peace Programme in County Monaghan.

To achieve the desired community changes, targets for cross community participation of at least 20% participation from minority religious communities and 20% attendance from ethnic minority communities are in place.

This is in excess of the proportionate representation within the population of PUL communities at 7.3% (2016 census) and BME communities within the county but based on experience of previous peace activities is deemed to be deliverable.

STRATEGIC AND CORPORATE POLICY CONTEXT

Not only does the Peace Campus deliver directly a positive contribution to the aims and objectives of the Peacebuilding, but it also aids in the delivery of the objectives of the Monaghan County Council Corporate Plan including:

- The Local Economic & Community Plan
- Healthy Ireland: A Framework for improved health & wellbeing & Better Outcomes, Brighter Futures.
- The National Policy Framework for Children & Young People.

NEED AND DEMAND

The community facilities have been actively called for by the whole community and confirmed to be a need by statutory agencies. Furthermore, the Peace Campus is additional to

and does not displace any existing community facilities, businesses and services in the Monaghan area, nor does it have the potential to impact on any comparable facilities on a cross-border basis.



MONITORING AND EVALUATION

Quantitative and qualitative measures have been identified for the monitoring of capital construction, achievement of sustainable development indicators, achievement of participant numbers and attitudinal change created. Regular progress reports are provided to SEUPB as key funders, as part of our Governance protocols.

HORIZONTAL PRINCIPLES

The project makes a positive contribution to sustainable development through the regeneration of a brown field site with an environmentally conscious building design.

It contributes positively to social equity and cohesion by providing a safe shared space for the whole community, cross-border and beyond, which creates increased personal capacity and employment opportunity.

The Peace Campus is designed to actively dispel discrimination in all its forms providing space & activities, which are welcoming to everyone regardless of background, gender, ethnicity, age, ability, religious belief or sexual orientation.



EXIT STRATEGY AND MANAGEMENT

Monaghan County Council is committed to resourcing and sustaining the project for at least 20 years.

To this end, the Peace Campus is managed in-house by the Culture and Development Team with Peacebuilding, Marketing and Communications expertise

on site, as part of the remit to ensure the facility is developed, grown, sustained and managed as a Peace Campus in accordance with its remit.

A Social Charter is in place for the Peace Campus to distinguish it from any other Council owned building.

TRANSFORMATIVE EFFECT

The building is regionally significant & will have a transformative effect on the provision of shared space, which will build community cohesion and overcoming the legacy of conflict in the area.

World Peace Day 21st September marked the official launch of Peace Campus

Operational Services, which include integrated hire spaces for communities and Stakeholders and Partners in Peacebuilding - be it research, education, policymaking, funding – both locally, regionally, cross-border and beyond our shores.

FUNDING

Peace funding has been vital, not only towards the construction of the building but to the delivery of services, facilities and cross-community activities for the lifetime of Monaghan Peace Campus.

The Peace Campus is supported by the EU's PEACE IV Programme, managed by the Special EU Programmes

Body (SEUPB) <https://www.seupbeu/>. The financial support provided through the PEACE IV Programme was €14,476,652.27.

Applications were submitted by Monaghan County Council to SEUPB in October 2021 and November 2023 for additional funding.

SEUPB approved €3.76million & €1.174m respectively, therefore revised total grant funding for the project was €14.476m – an increase of almost €5m from the original grant funding of €9,541,081.

For further information please contact:

Christina Captieux

Culture and Development Manager

Culture and Development Office

Monaghan Peace Campus

T: +353 (0)47 30046/47

E: Development@monaghanpeacecampus.com



Rialtas
na hÉireann
Government
of Ireland

Tionscadal Éireann
Project Ireland
2040

Peace 
Northern Ireland - Ireland
European Regional Development Fund



Department for
Communities
An Roinn
Pobal
Department for
Communities
www.communities-ni.gov.uk





Campas Síochána | **Monaghan**
Mhuineacháin | **Peace Campus**

CONTACT

T: +353 (0)47 30046/47

E: info@peacecampus.com

www.monaghanpeacecampus.com